

Ammo Case Lighting Installation

SAP#100651023



Visit www.ladarling.com/resources or scan the QR code above for the latest assembly instructions.

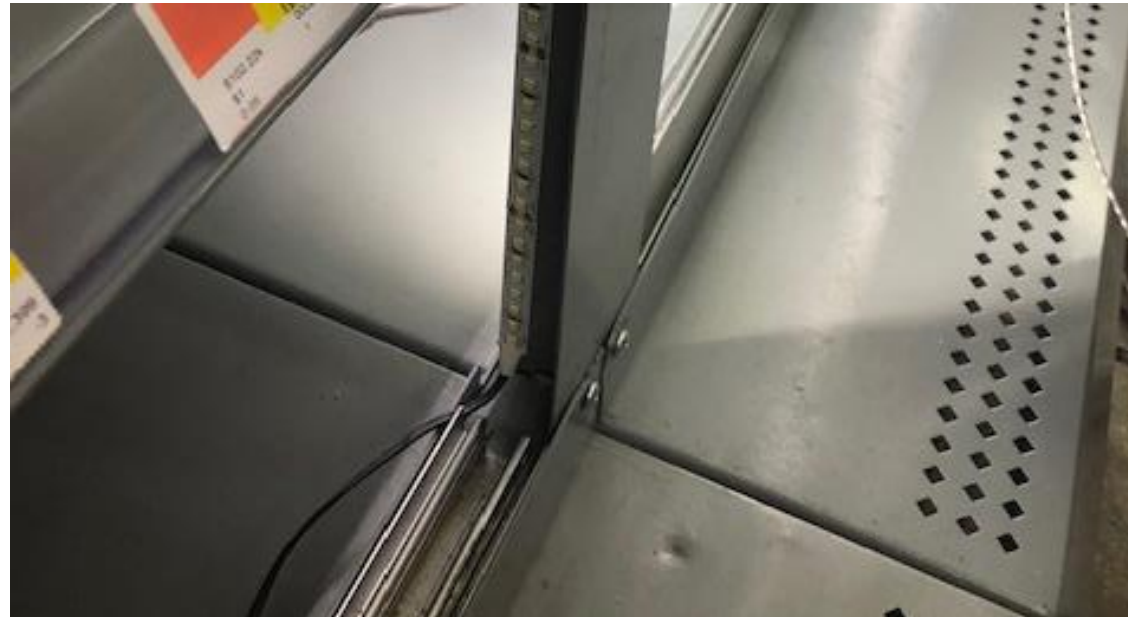
Step 1: Peel back 2"-3" of the adhesive backing from the light strip.

Step 2: Stick the light to the side of the end panel or mid divider panel 1"-2" from the base of the cabinet.

Step 3: Continue peeling back approx. 12" of adhesive and work your way up the side panel.



STEP 1



STEP 2



STEP 3

Step 4: At the top of the panel, begin attaching the light strip to the bottom side of the top of the cabinet as shown in STEP 4 detail below.

Step 5: Continue attaching light down the shelf and down the opposite side panel as shown in STEP 5 detail below.

Step 6: Connect Light to power supply and attach to nearest power source



STEP 4



STEP 5