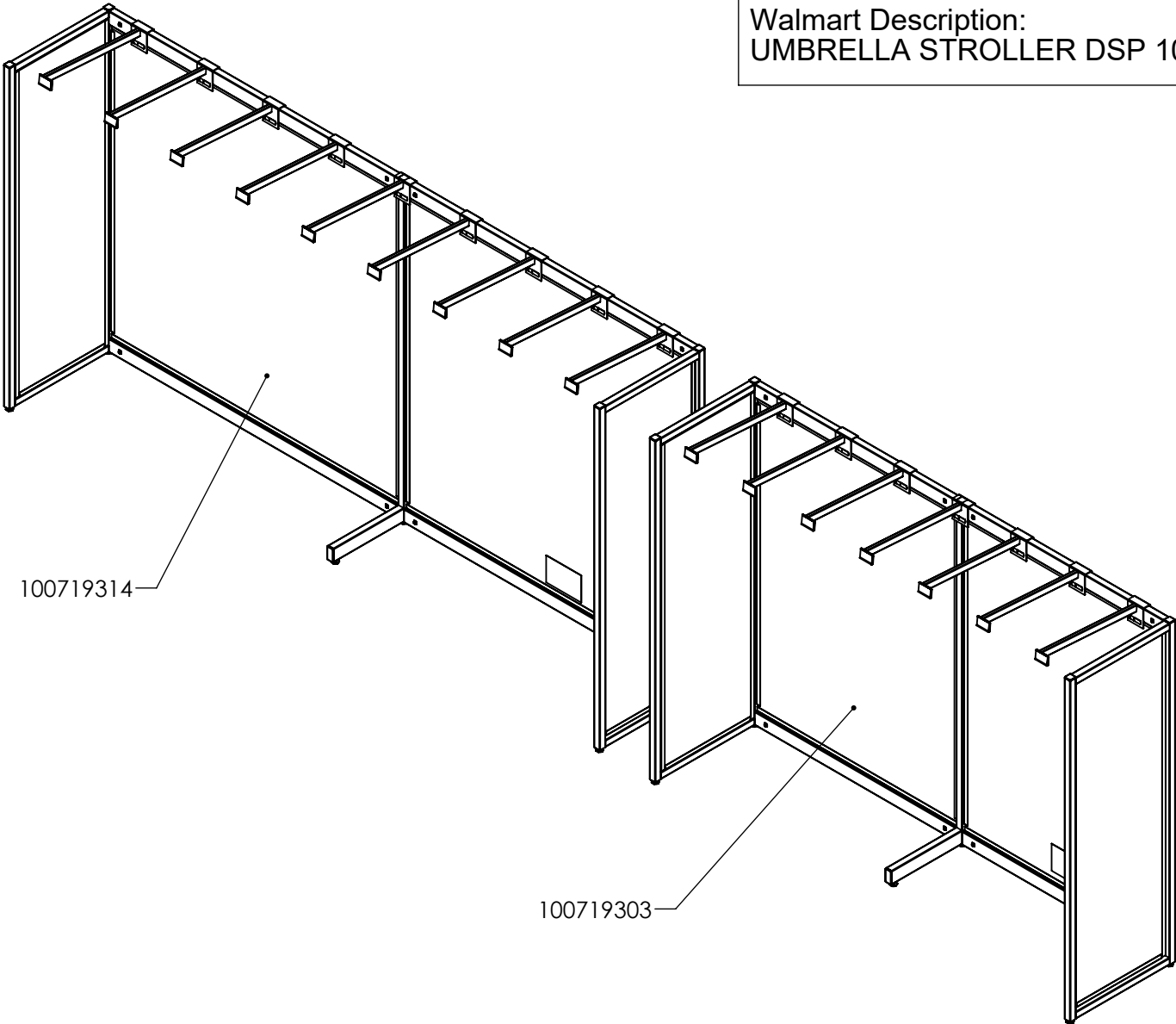


BABY STROLLER 102" AND 72" INSTRUCTIONS

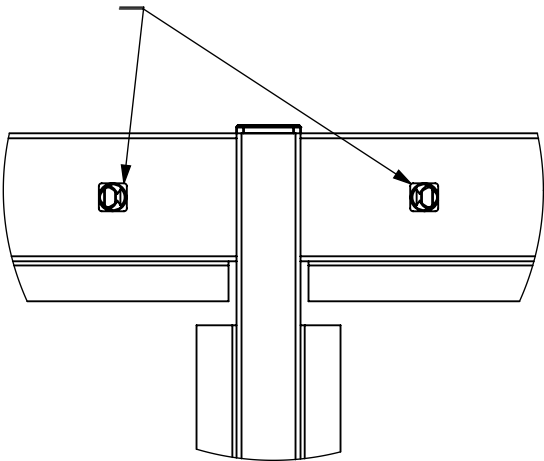
Walmart Part #: 100719314 & 100719303

Walmart Description:  
UMBRELLA STROLLER DSP 102X50.5 & 72X50.5

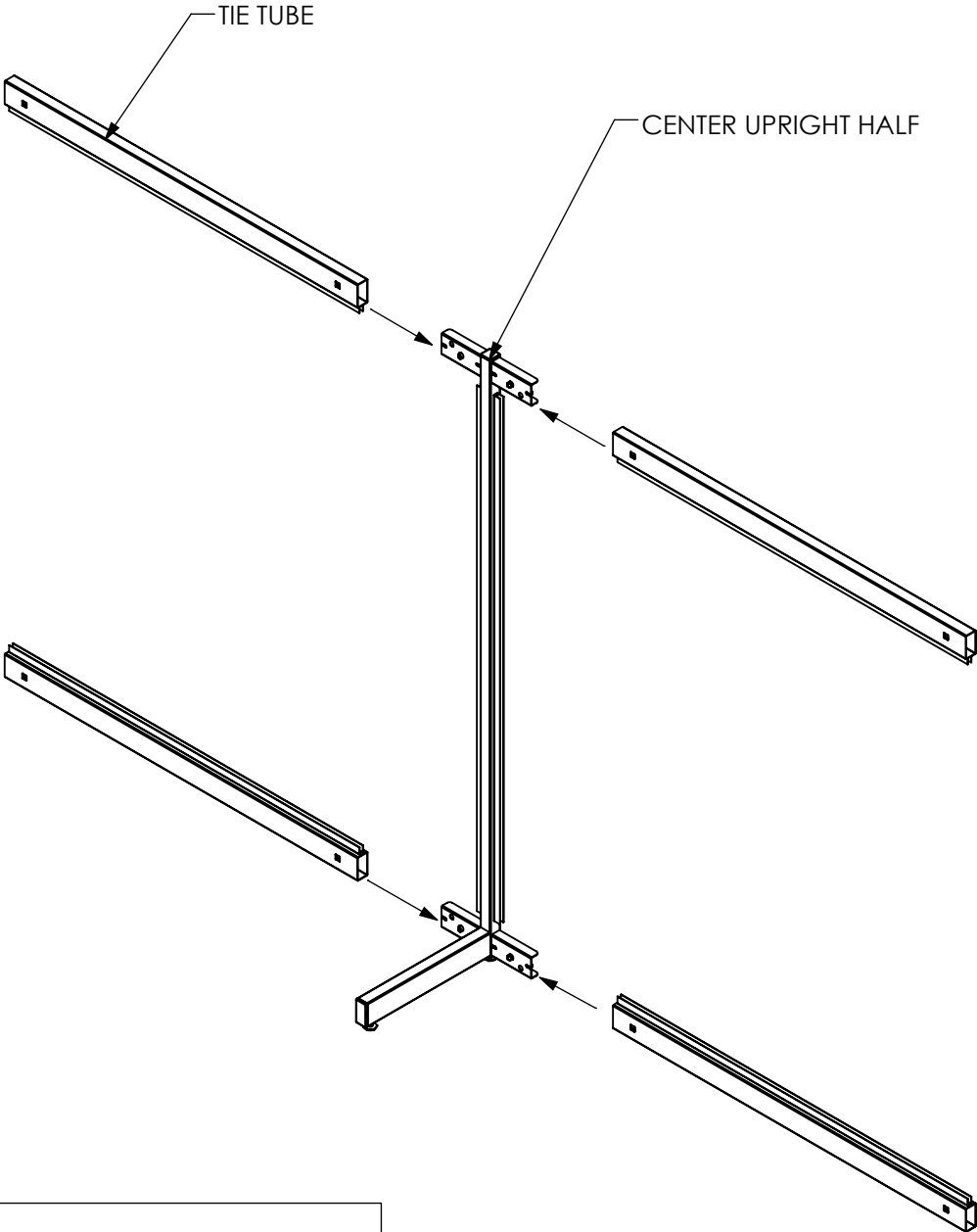


Scan the QR code or visit  
[www.ladarling.com/Stroller-Rack/](http://www.ladarling.com/Stroller-Rack/)  
for the digital copy of the instruction sheets.

STEP 1: LOCATE CENTER UPRIGHT HALF  
AND TIE TUBES AND ASSEMBLE AS SHOWN.  
NOTE: MAKE SURE SNAP BUTTONS (4X) ARE  
FULLY ENGAGED.



DETAIL A



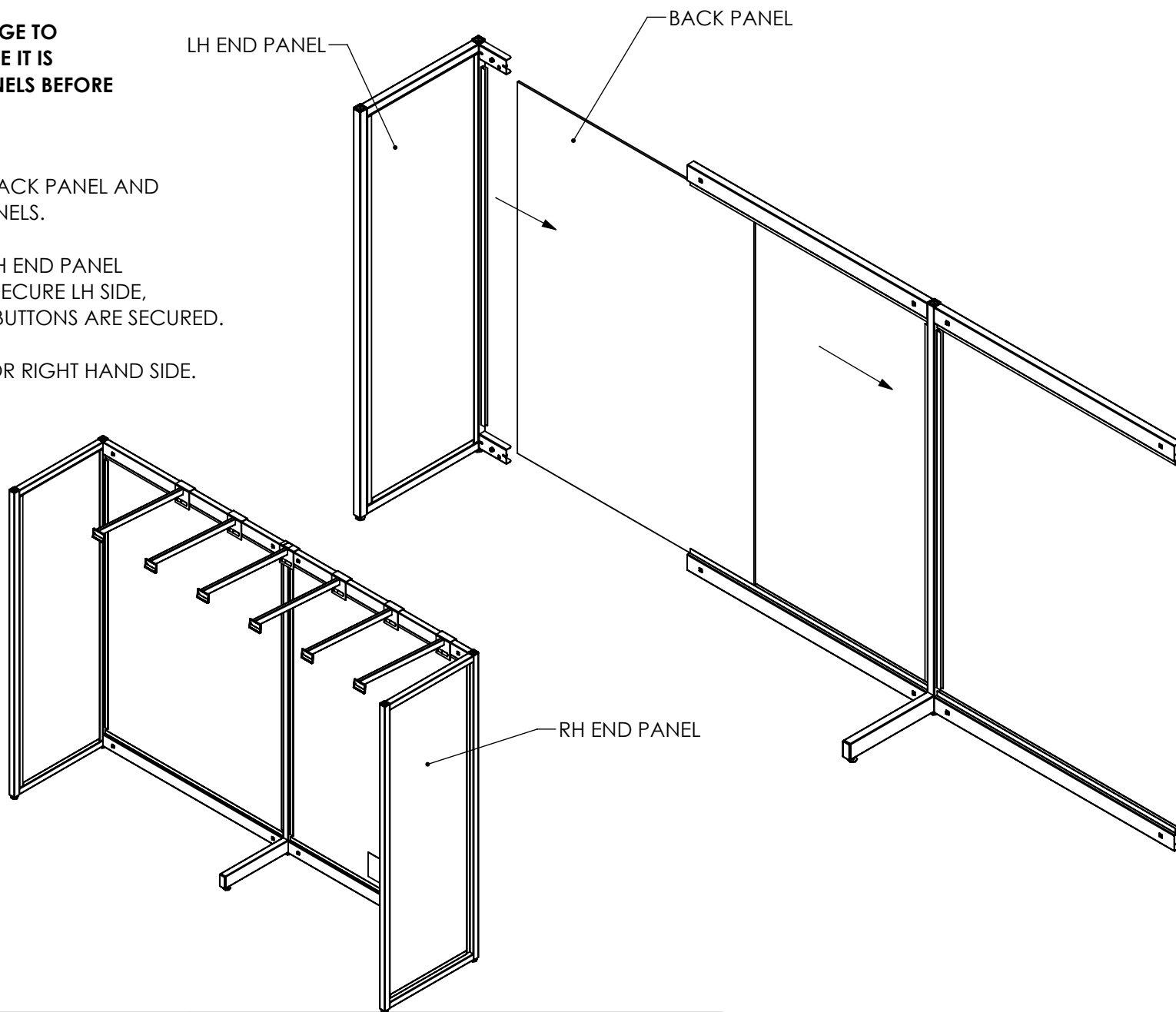
(72" SHOWN)

**NOTE: TO AVOID DAMAGE TO BACK PANEL, MAKE SURE IT IS FULLY SEATED IN CHANNELS BEFORE INSTALLING END PANEL.**

STEP 2: LOCATE BACK PANEL AND INSTALL IN CHANNELS.

STEP 3: LOCATE LH END PANEL AND INSTALL TO SECURE LH SIDE, ENSURING SNAP BUTTONS ARE SECURED.

STEP 4: REPEAT FOR RIGHT HAND SIDE.



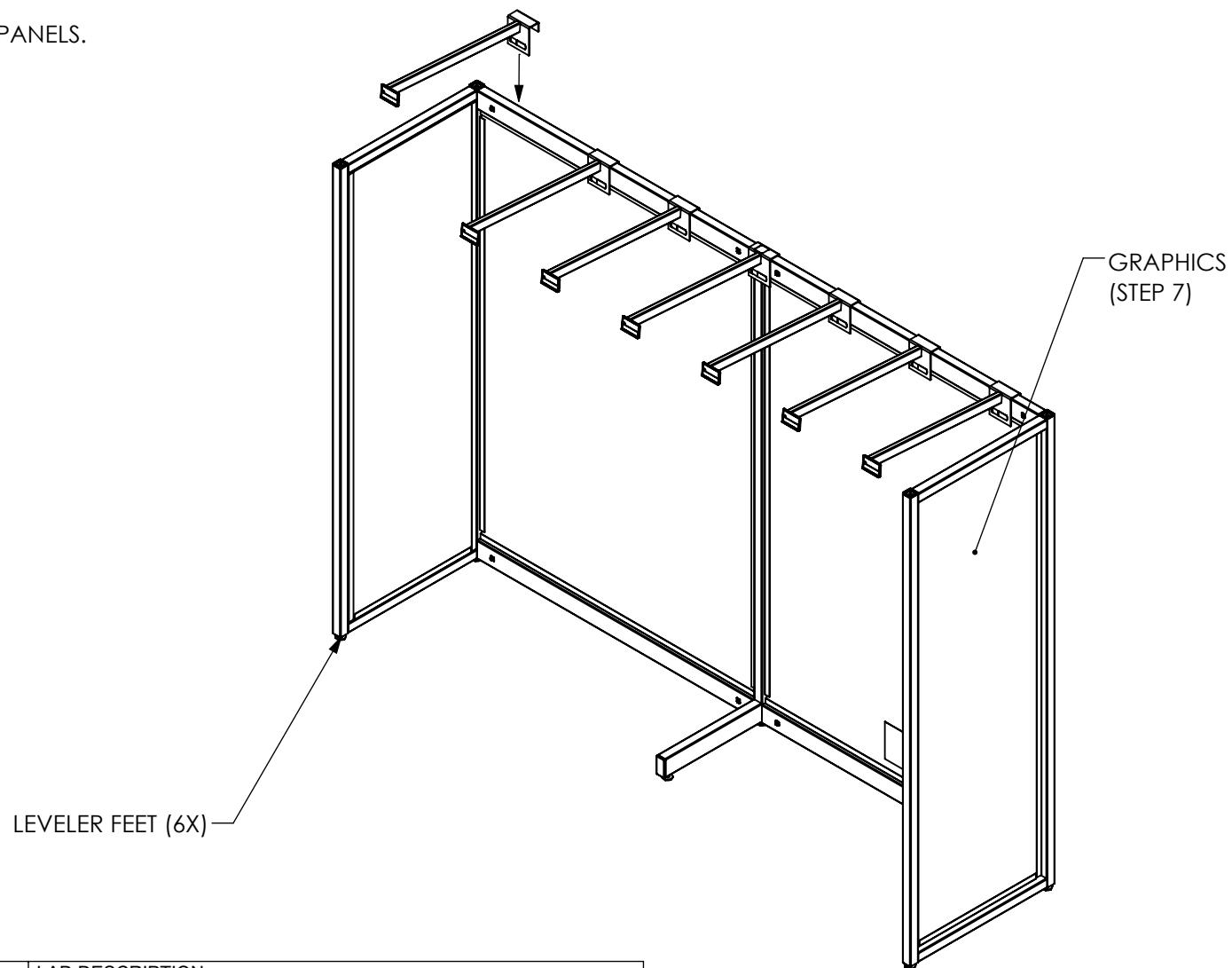
(72" SHOWN)

STEP 5: INSTALL HANG BARS.

[(7X) FOR 72", (9X) FOR 102"]

STEP 6: ADJUST LEVELER FEET AS NEEDED.

STEP 7: ATTACH GRAPHICS TO OUTSIDE PANELS.





(72" SHOWN)